

CREATING INTERFACES

Capacity building in "Citizen Science for Smart Cities": Local knowledge integration in the era of digital change



Key Facts



Funding Agency

Belmont Forum and Joint Programming Initiative (JPI) Urban Europe / BELMONT FORUM / Horizon2020



Project Call

Sustainable Urbanisation Global Initiative (SUGI) / Food-Water-Energy Nexus



Duration

03/2019 - 02/2021



Coordinator

European Institute for Energy Research (EIFER)



Partners

- University of Delaware, School of Public Policy and Administration
- The National Center for Atmospheric Research (NCAR)
- University of Warwick, Centre for Interdisciplinary Methodologies
- Pracownia Zrównoważonego Rozwoju (PZR)
- SweGreen
- Nicolaus Copernicus University, Institute of Sociology
- Danube Delta National Institute for Research and Development (DDNI)
- 52' North Initiative for Geospatial Open Source Software GmbH
- KTH Royal Institute of Technology



Website

<https://creatinginterfaces.eifer.kit.edu/>

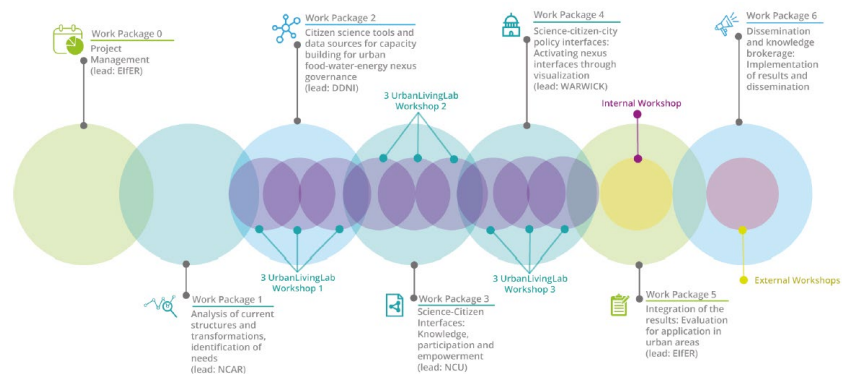
This project has received funding from the European Union's Horizon 2020 research and innovation program under grant agreement No 830254.



Project Objectives

The project "Creating Interfaces" addresses capacity building for the urban food-water-energy (FWE) nexus, making the FWE linkages understandable to the stakeholders (city government, science, business and citizens), and facilitating cooperation and knowledge exchange among them.

It will develop and test innovative approaches for local knowledge co-creation and participation through Urban Living Labs and Citizen Science approaches in three mid-size cities on a water front: Tulcea (Romania), Wilmington (USA) and Slupsk (Poland).



Project structure overview

EIFER's Contribution

EIFER acts as project coordinator and as integrator of the project results. EIFER contributes to the development and implementation of the participative modelling and co-creation approaches, e.g. the concept for the Urban Living Lab workshops, the participative knowledge creation, vision building and data gathering as well as the building of socio-technical interfaces and finally the dissemination. The EIFER team contributes with its expertise in data sciences, sociology, urban planning, geography and geology.

Contacts

Jochen Wendel
+49 (0) 721 6105 1414
jochen.wendel@eifer.org

Pia Laborgne
+49 (0) 721 6105 1353
pia.laborgne@eifer.org

EIFER - Europäisches Institut für
Energieforschung EDF-KIT EWIV
Emmy-Noether-Straße 11
76131 Karlsruhe, Germany
www.eifer.org