

MoBILE

Modular battery storage systems linked to intelligent charging infrastructure for electric vehicles



Key Facts



Funding Agency

Ministry of the Environment, Climate Protection and the Energy Sector Baden-Württemberg



Duration

10/2019 - 04/2021



Coordinator

European Institute for Energy Research (EIFER)



Partners

- KIT IEH
- Stadtwerke Hockenheim
- emodrom group
- Framatome GmbH / covalion (associated)

Pilotprojekt „Intelligente Netzanbindung von Parkhäusern und Tiefgaragen (INPUT)“ im Rahmen des Strategiedialogs Automobilwirtschaft Baden-Württemberg.



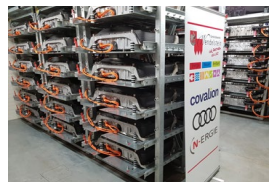
Ministerium für Umwelt, Klima und Energiewirtschaft Baden-Württemberg



Project Objectives

The MoBILE project is testing the value proposition of a mobile and modular battery system including congestion management and service provision to the distribution grid. The project thus acts as a lighthouse for the grid-friendly deployment of e-mobility in the Federal State of Baden-Württemberg.

An expandable battery container stacked with 2nd life batteries will be tested at the Hockenheim race track and event location. The storage system aims at reducing peak loads induced by high-performance charging stations (350kW) installed on-site at the new Porsche Experience Center inaugurated in October 2019. The project will analyse the induced additional flexibility potentials.



EIFER's Contribution

- Techno-economic evaluation of use cases and evaluation of operating strategies for the battery system in the local energy system.
- General recommendations for its economic operation and analysis of related impacts of the regulatory framework.

Key Outcomes

Demonstration of the integration of a battery storage system into the future energy system of the Hockenheim circuit in order to delay the physical grid extension as well as to replace diesel generators mainly used for events.

Contact

Jan Eberbach
+49 (0) 721 6105 1491
jan.eberbach@eifer.org

EIFER - Europäisches Institut für
Energieforschung EDF-KIT EWIV
Emmy-Noether-Straße 11
76131 Karlsruhe, Germany
www.eifer.org