

# Sylv'Valor

## Building the forest of tomorrow



### Key Facts



#### Funding Agency

Région Nouvelle  
Aquitaine, Conseil Général  
de Gironde and ADEME



#### Duration

02/2022 - 07/2023



#### Coordinator

Centre Régional de la  
Propriété Forestière Nouvelle  
Aquitaine (CRPF)



#### Partners

- Sysdau - Syndicat Mixte du SCoT de l'Aire Métropolitaine Bordelaise
- SSSO - Syndicat des Sylviculteurs du Sud Ouest
- PEFC Nouvelle-Aquitaine

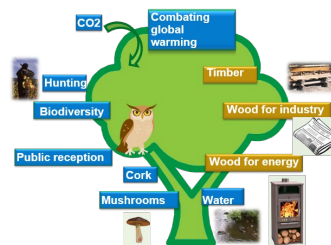
*This project has received funding from: Région Nouvelle Aquitaine, Conseil Général de Gironde and ADEME.*



### Project Objectives

Sustainable forest management reconciles environmental, economic and social aspects as well as the production of wood. The production of different wood products (timber, industrial wood, energy wood) remains one of the main economic objectives for forest owners. However, the forest fulfils many other functions such as water quality, carbon sequestration, carbon storage, biodiversity, recreation, regulation of the temperature, etc. Taking into account this multifunctionality makes its management challenging. The objective of the project is to understand the expectations and issues of the different forest stakeholders, and to propose an approach allowing their cohabitation.

A methodology will be elaborated with the participation of rural and urban actors in order to develop an innovative forest management strategy ensuring the complementarity of forest functions.



### EIFER's Contribution

- Survey conduction with forest stakeholders (incl. communities and the general public), using a geographic information system (GIS) developed at EIFER.
- Contribution to the analysis of the state of the art of the services and uses of the forest
- Elaboration of the methodology and communication with project partners, their networks and other audiences (scientific, professional and public).
- Development of an online platform to share information and to communicate about the living labs
- Contribution to the definition of the governance and the functioning of the living labs

### Contact

Marie-Laure Rabot-Querci  
+49 (0) 721 6105 1483  
[marie-laure.rabot-querci@eifer.org](mailto:marie-laure.rabot-querci@eifer.org)

EIFER - Europäisches Institut für  
Energieforschung EDF-KIT EWIV  
Emmy-Noether-Straße 11  
76131 Karlsruhe, Germany  
[www.eifer.org](http://www.eifer.org)